

Projet de construction d'une habitation

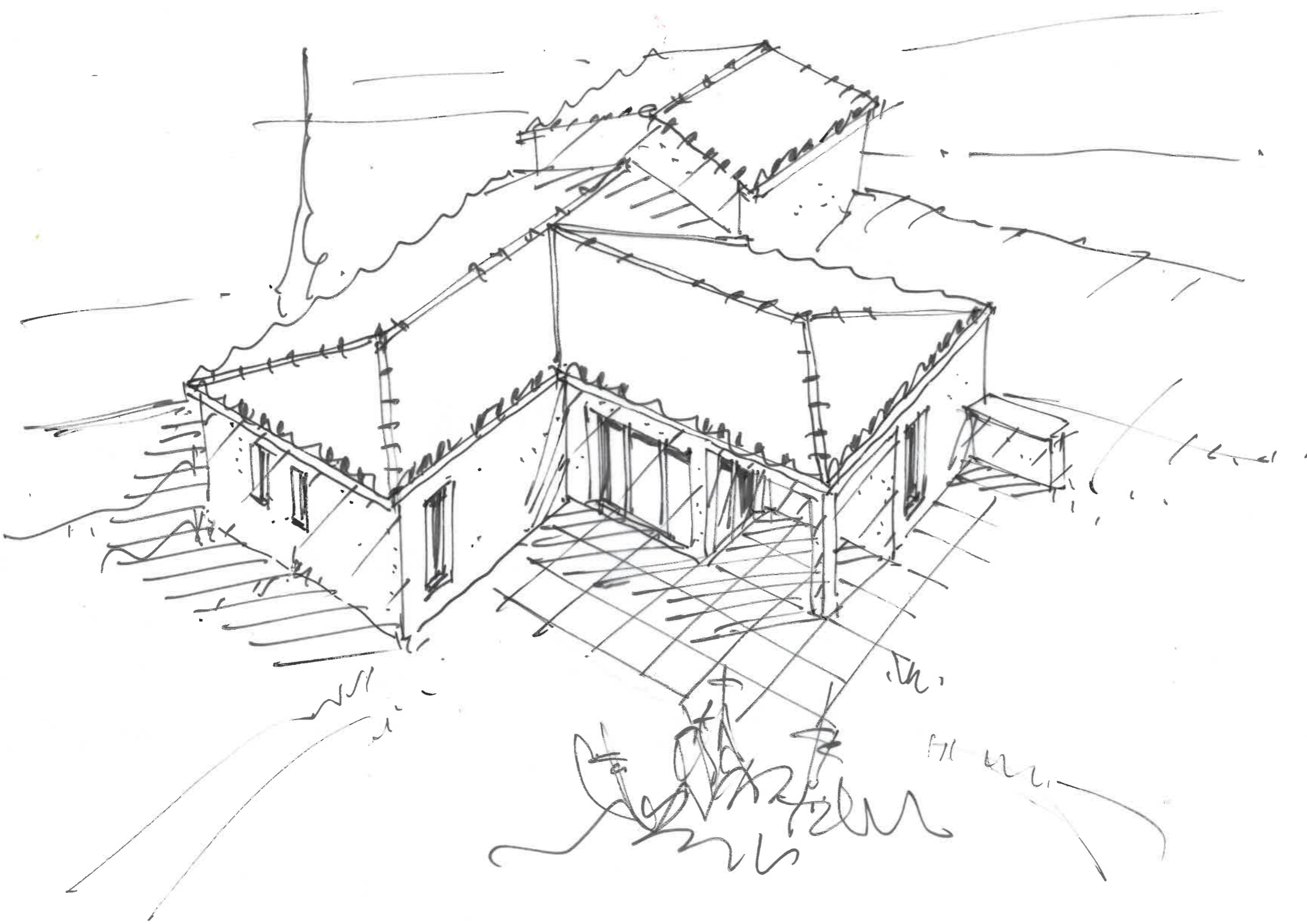
« La Rose Blanche »

CHATEAUNEUF / ISERE

Lot 16

Plan – Ech. 1/100° - Croquis Perspective

25/07/2022



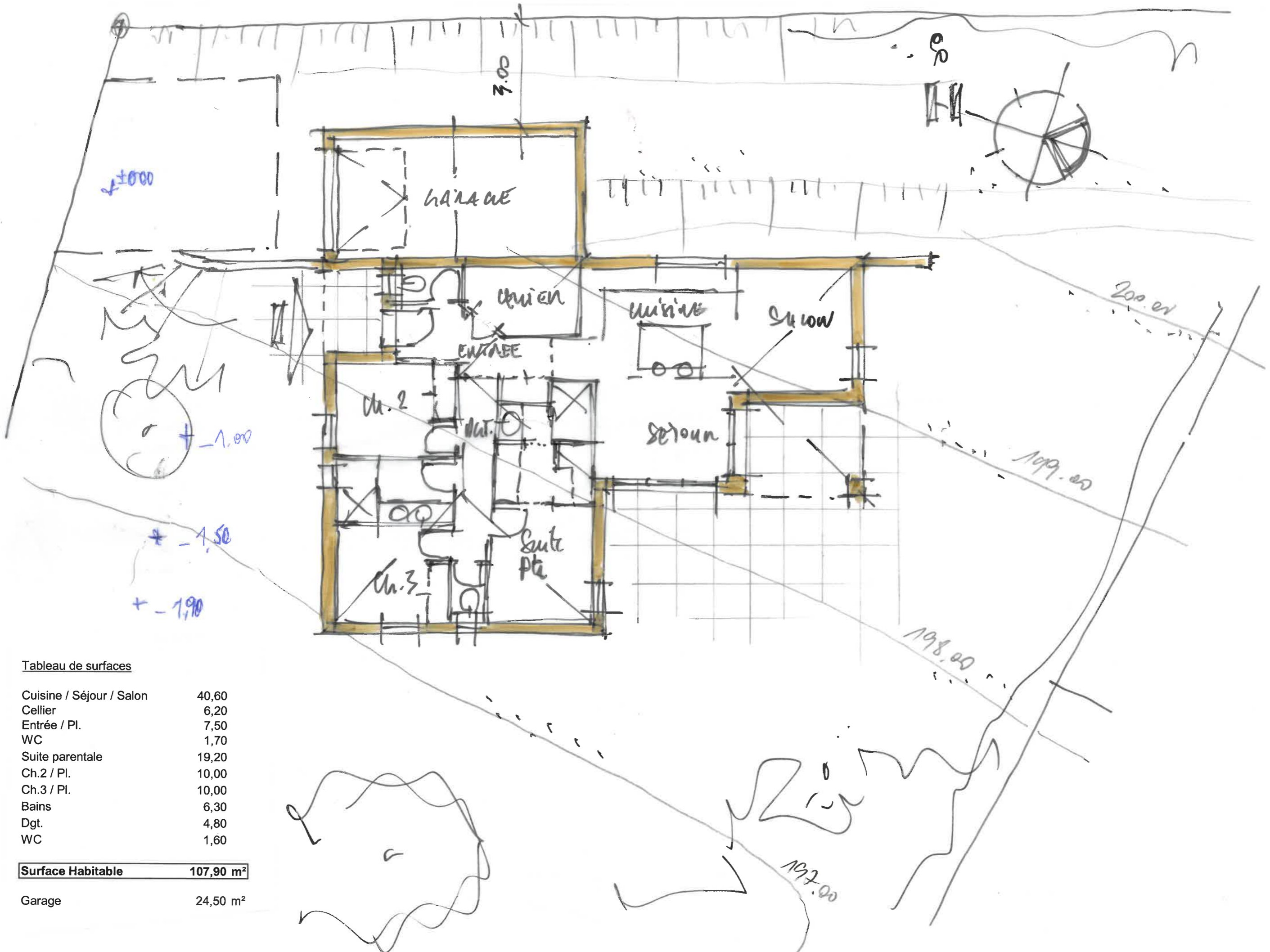


Tableau de surfaces

Cuisine / Séjour / Salon	40,60
Cellier	6,20
Entrée / Pl.	7,50
WC	1,70
Suite parentale	19,20
Ch.2 / Pl.	10,00
Ch.3 / Pl.	10,00
Bains	6,30
Dgt.	4,80
WC	1,60

Surface Habitable 107,90 m²

Garage 24,50 m²